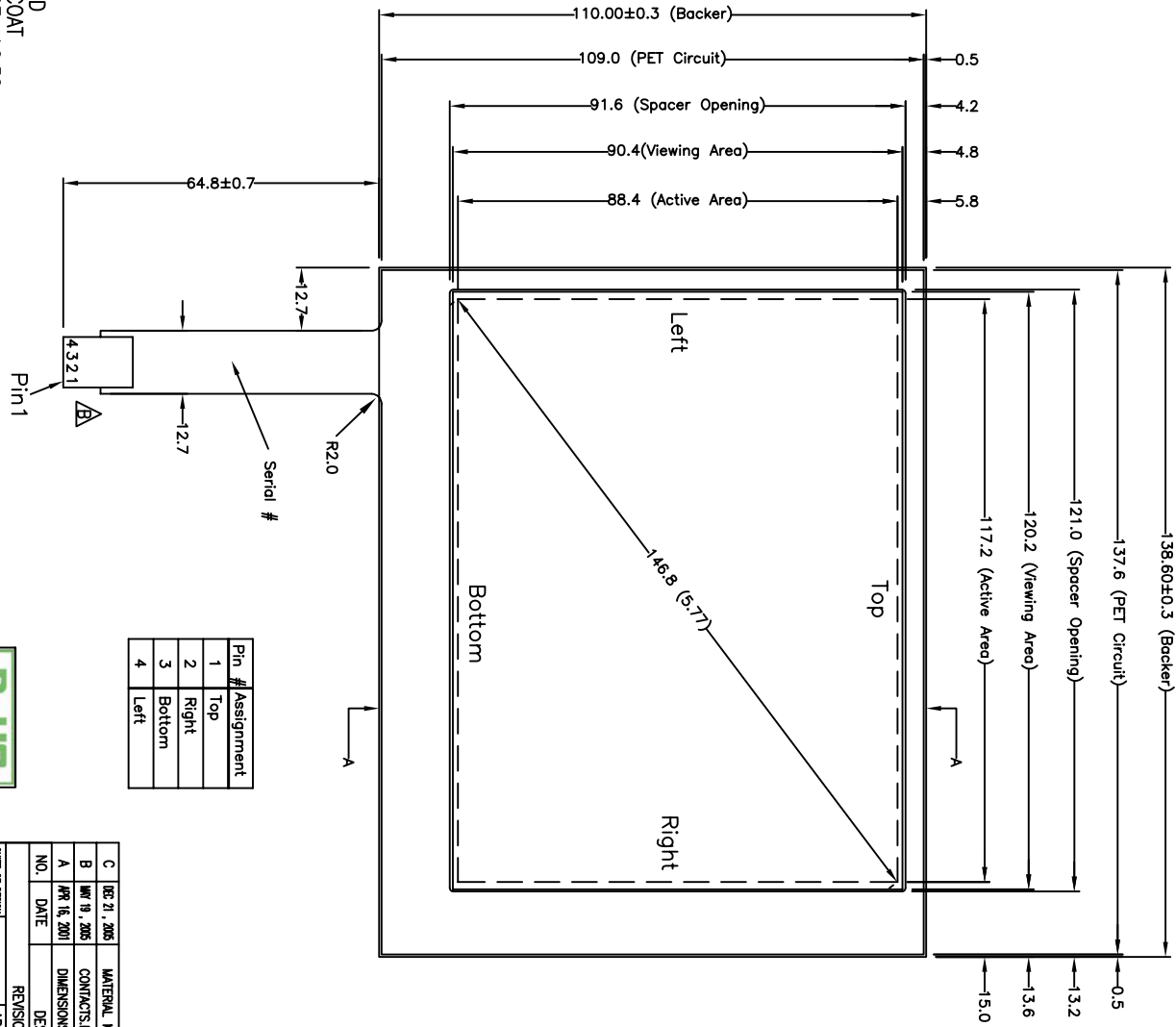


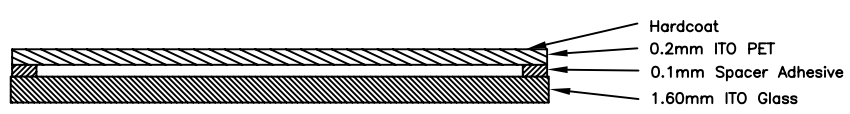
FRONT VIEW



NOTES:

1. ITO GLASS THICKNESS : 1.60mm
2. OVERALL THICKNESS : 1.90±0.10mm
3. CONNECTOR AND PINOUT AS INDICATED
4. FRONT SURFACE : ANTI-GLARE HARDCOAT
5. LAYER TO LAYER ASSEMBLY TOLERANCE: ±0.50mm
6. TAIL TYPE : INTEGRAL PET FILM WITH AMP-C , GOLD-PLATED CONTACTS
7. OTHER SPEC : SEE APPROVED SHEET

Pin #	Assignment
1	Top
2	Right
3	Bottom
4	Left



C	DEC 21, 2005	MATERIAL MODIFY	ALEX
B	MAY 19, 2005	CONTACTS/HOUSING MODIFY	ALEX
A	APR 16, 2001	DIMENSIONS MODIFY	ALEX
NO.	DATE	DESCRIPTION	CHK
REVISION			
DATE OF DESIGN	APPROVED	Alex	
ENGINEER	PROJECT NUMBER		
DRAWN BY	DATE	OCT 12, 2007	
SHT 1 OF 1	Denise	REV.	C

Apex Material Technology Corp.

TOLERANCES UNLESS SPECIFIED	MODEL NAME : 9503
X ± 0.50	DWG NO : 9503-3-011
XX ± 0.25	SCALE: 1:1
XXX ± 0.10	UNIT: mm
ANGULAR	